

THERMOCOUPLE AND RTD JACK PANELS FOR FS CONDUIT BOX MOUNTING

All listed panels are 2(3/4)" w x 4(1/2)" h aluminum plates

FIG. 1

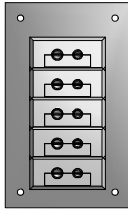
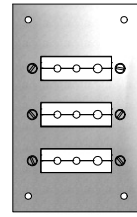


FIG. 2



FIG. 3



EXAMPLE ORDER NUMBER: FSB-K-3

Thermocouple Jack Panels

CODE	DESCRIPTION	
STANDARD SIZE	NO. CIRCUITS	FIG. NO.
FSB - [1] - 1	1	1
FSB - [1] - 2	2	1
FSB - [1] - 3	3	1
FSB - [1] - 4	4	1
FSB - [1] - 5	5	1
FSF - [1] - 6	6	1

[1] = Insert calibration code J,K,T,E,N,R,S, or U (type N supplied in standard size only).

3-Wire RTD Jack Panels

CODE	DESCRIPTION	
STANDARD SIZE	NO. CIRCUITS	FIG. NO.
FSF - U - 1 - T	1	3
FSF - U - 2 - T	2	3
FSF - U - 3 - T	3	3
FSF - U - 4 - T	4	3
FSF - U - 5 - T	5	3

Above panels are 3-pin connections.

FS Conduit Boxes For Above Jack Panels

CODE	BOX MATERIAL	MAX. NUMBER OF CIRCUITS	CONDUIT OPENING (inches)	FIG. NO.
638	Diecast aluminum	4	3/4 NPT	2
640	Diecast aluminum	5	3/4 NPT	2
639	Glass/nylon	6	3/4 NPT	2

THERMOCOUPLE AND RTD JACK PANELS

FIG. 4

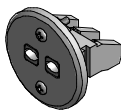
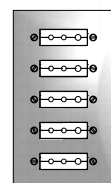


FIG. 5



FIG. 6



EXAMPLE ORDER NUMBER: SSB-T-8

Thermocouple Jack Panels

CODE		DESCRIPTION	
STANDARD SIZE	MINIATURE SIZE	NO. CIRCUITS	FIG. NO.
82[1] - R	84[1] - R	1	4
SSB - [1] - 6	SMF - [1] - 6	6	5
SSB - [1] - 8	SMF - [1] - 8	8	5
SSB - [1] - 10	SMF - [1] - 10	10	5
SSB - [1] - 12	SMF - [1] - 12	12	5

[1] = Insert calibration code J,K,T,E,N,R,S, or U. (type N supplied in standard size only)

3-Wire RTD Jack Panels

CODE	DESCRIPTION	
STANDARD SIZE	NO. CIRCUITS	FIG. NO.
SSF - U - 6 - T	6	6
SSF - U - 8 - T	8	6
SSF - U - 10 - T	10	6
SSF - U - 12 - T	12	6

Above panels are 3-pin connections.

Jack Panels Dimensions

NO. CIRCUITS	WIDTH (inches)	LENGTH (inches)	WIDTH (inches)	LENGTH (inches)
	STANDARD SIZE		MINIATURE SIZE	
6	3 1/4	5 3/4	2	5
8	3 1/4	7 1/4	2	6
10	3 1/4	8 3/4	2	7 1/4
12	3 1/4	10 1/4	2	8 1/2
1	Conduit knockout sizes for round panel jacks. Standard size: 3/4" Miniature size: 1/2"			

Standard and miniature jack panels can be custom designed to provide other dimensions, number of jacks, or mixed calibrations. Consult factory for availability.

